



**Securemen anti-slip solutions meet the highest quality standards**

## SECUREMEN ANTI-SLIP

The human stride is one of the most dangerous ways in the animal kingdom for getting around. Over the course of two paces, a human is on one foot for 84 % of the time.

Slipping, tripping and falling are the most common causes of notifiable accidents in the working environment, making up approximately 60 % of all cases. And accidents caused by tripping, slipping and falling are estimated to cost the German economy around 8 billion euros annually.

### Uses

The wide range of anti-slip products offered by Securemen provides the optimal solution for every situation. Our anti-slip surfaces come in many different colours and finishes, as fibreglass or aluminium treads as well as in the shape of information and warning signs.

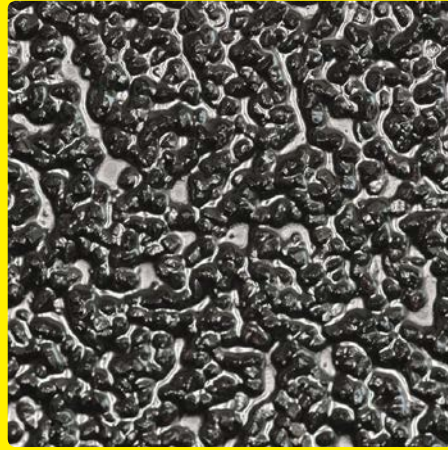
Securemen anti-slip surfaces prevent slipping accidents on underlying materials that are smooth, damp or smeared with oil or grease. They increase workplace safety and reduce costs arising from damage claims.

They are versatile and can be used in entrances, passages, footpaths, on stairs, gradients and ramps, as well as in machines and vehicles, kitchens and canteens to name a few examples.

Securemen anti-slip products are of the highest quality and comply with all the relevant quality standards (BGR 181, EU directive 89/654/ECC or DIN 67510). They are available at unbeatable prices for maximum economy and effectiveness.

### Advantages:

- ♦ Risk prevention
- ♦ Less sick leaves
- ♦ Reduced costs arising from damage claims
- ♦ Suitable for indoor and outdoor areas
- ♦ Surfaces and treads from a single source
- ♦ High warning effectiveness
- ♦ Simple, low cost installation
- ♦ Robust and durable



### Product samples and orders: the Securemen ordering service

If you're interested in occupational safety, you've come to the right place. Talk to us at Securemen if you are looking for safety features and signs for warehouses, garages, retail space, hotels, hospitals and public buildings. We will be happy to help you.

### Direct queries – including sample requests – to:

SECUREMEN GmbH  
Haus Cumberland  
Kurfürstendamm 194  
10707 Berlin, Germany  
Phone +49 30 411 9191 41  
Fax +49 30 411 9191 49  
sales@securemen.com  
www.securemen.com

# SECUREMEN

## ANTI-SLIP SURFACES, MATS, TREADS







# SURFACES

Securemen anti-slip surfaces prevent slipping accidents on underlying materials that are smooth, damp or smeared with oil or grease. They increase workplace safety and reduce costs arising from damage claims.

Numerous different shapes and colours offer solutions for every situation:

**Universal**, available in rolls or individual strips in black, yellow, grey, blue, red, green, brown and transparent, is suitable for use on all smooth underlying materials with heavy traffic.

The **Warning Marker** surface, which comes in the signal colours yellow, pink, orange and green, yellow-and-black, and red-and-white, combines the identification of dangerous spots and slip prevention in one product.

The **Extra Strong** version is suitable for areas with high levels of use and heavy soiling. The luminescent variety prevents slips in emergency exits and escape routes. By contrast, the **Easyclean** version is perfectly suited to barefoot zones or private areas. This variety has lower slip resistance and is easy to clean.



- 60-grit aluminium oxide
- Slip resistance R13 (except for Easy Clean)
- Temperature range from +60/80 °C to -20/-40 °C



# GRP-TREADS

Fibreglass anti-slip treads and floor panels are the ideal solution for difficult surfaces. With their low density they are perfectly suited for use on stairs, ramps, entrances and passageways, machines and vehicles.

The special plastic with ISO polyester resin and reinforced with glass fibres can be individually cut and screwed or glued down, making it easy to install. The panels and treads are extremely robust, with high abrasion resistance. They are UV stable, noncorrosive, non-conductors and flame resistant.

Fiberglass anti-slip treads are available in **Medium** (46-grit) and **Extra Strong** (12-grit) in the colours black, yellow, grey and beige. You can choose between panels, edging and stair pieces.



- Panel, edge and stair treads
- Slip prevention R13
- Temperature range +120 °C to -20 °C

# ALUMINIUM TREADS

Aluminium anti-slip panels with pre-drilled holes for quick assembly are specially suited for materials like wood, mesh walkways and carpets. The anti-slip surface is the same as the universal surface, which allows for a variety of colours, and functions. The coating is interchangeable and it can be ordered with text on (e.g. “warning step”).

The aluminium treads, like the fibreglass ones, are available as panels, edging and stair pieces.



- Tile, edge and stair treads
- Slip prevention R13
- Surface is interchangeable

# WAY MARKERS

Way markers come in yellow, black, fluorescent yellow and luminescent in **Extra Strong**, **Malleable** and **Public 46** varieties. They can be used to indicate direction of movement in inside and outside areas and to mark emergency escape routes.

- Circle, arrow and shoe shapes
- Slip prevention R13
- Suitable for indoor and outdoor areas



# SIGNS

Information and warning signs combine slip resistance with the identification of dangerous areas.

The clear, durable printed image withstands medium to high loads and the signs are also available in luminescent varieties. They are suitable for indoor use to mark entrances, passageways and walkways.

- Warning and information signs
- Suitable for indoor and outdoor areas

